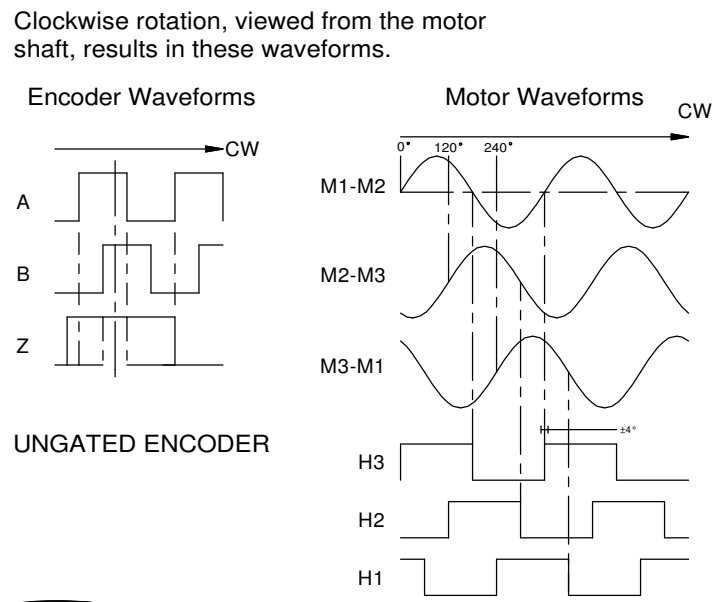


REVISIONS				
REV	ECN	DESCRIPTION	DATE	APP'D
A	DR8319	RELEASED	11/8/06	T.M.
B	ECN3230	WAS 33030-004-007, IS 33030-004, NOTES ADDED	07/03/07	J.S.

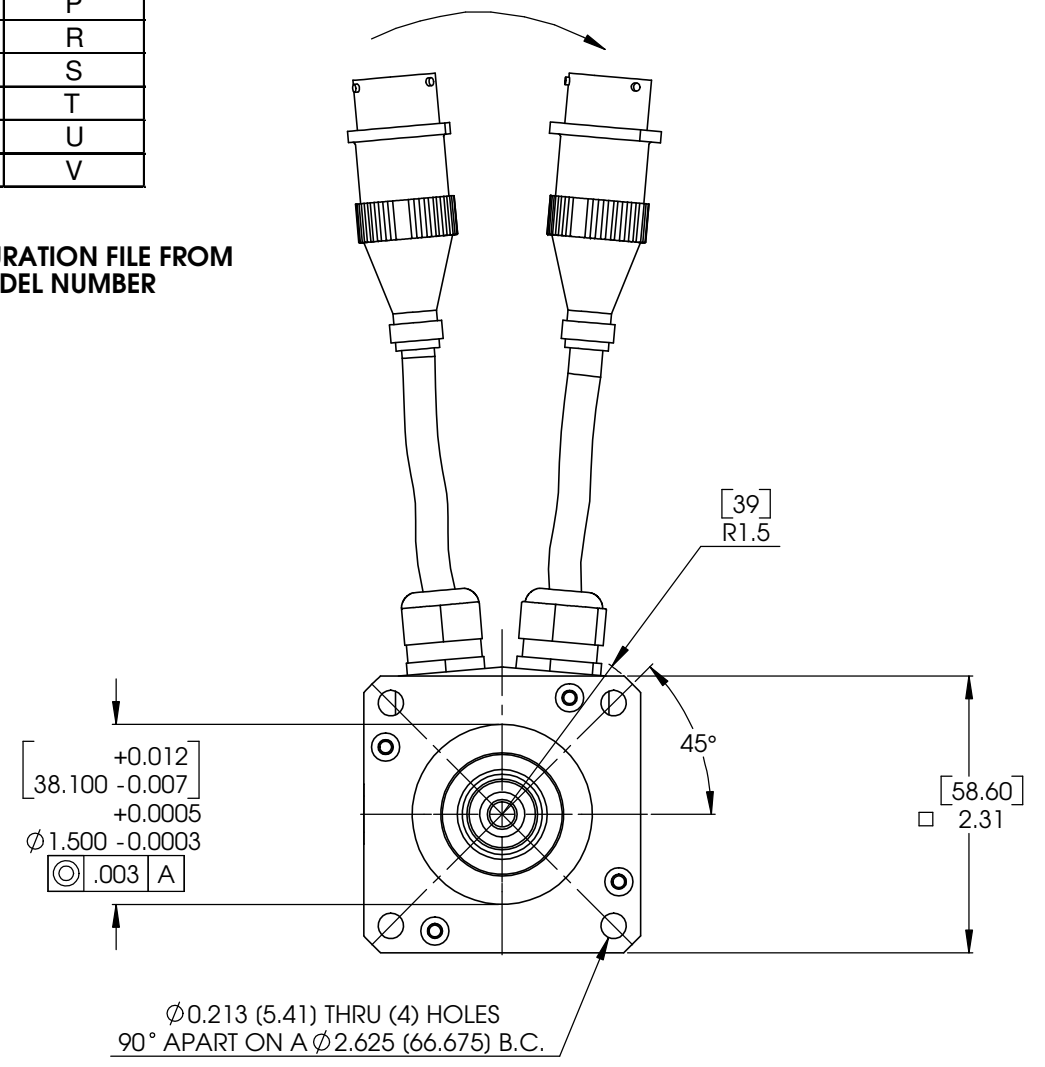
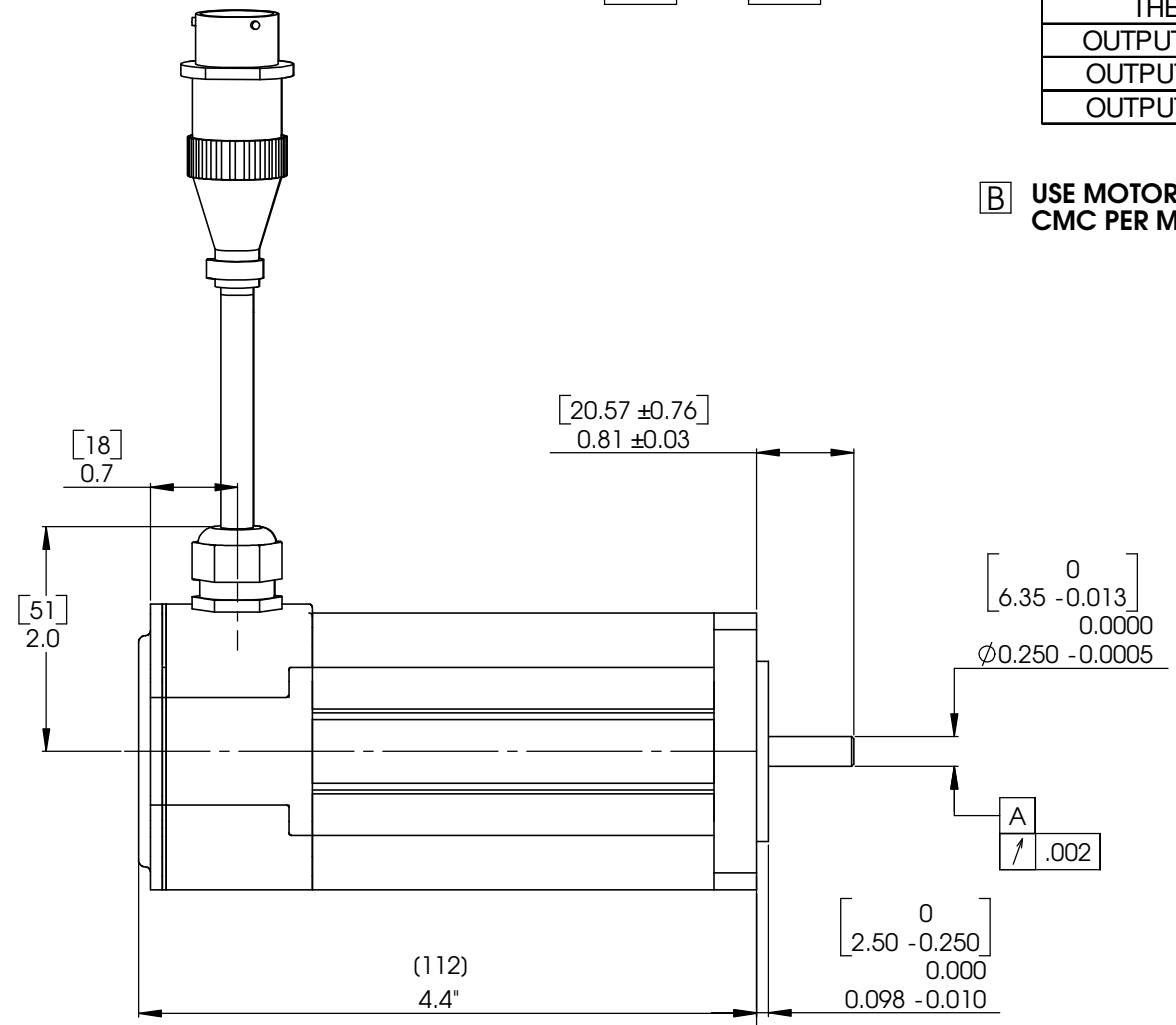
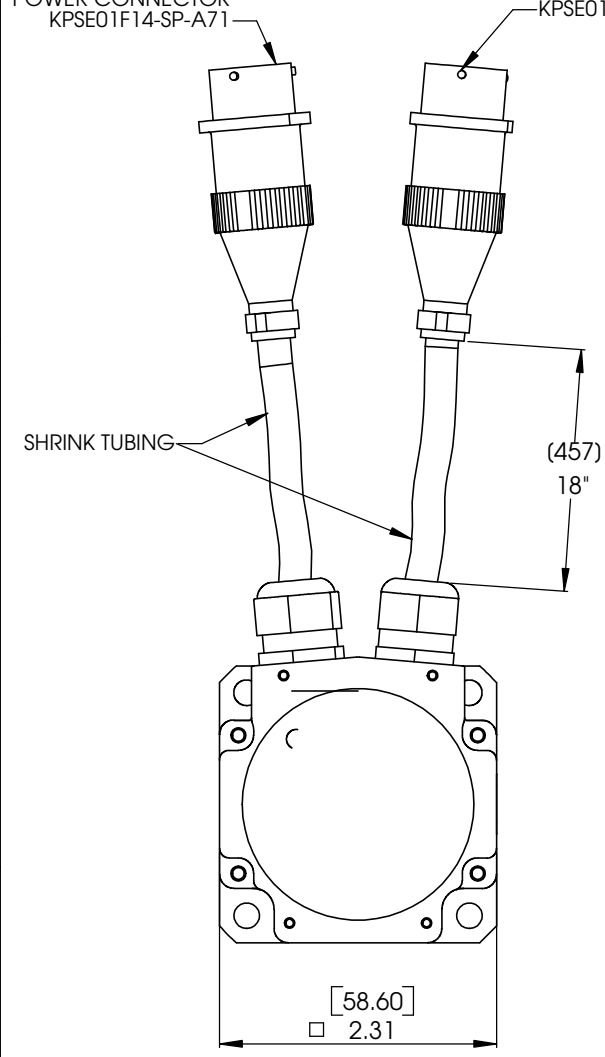
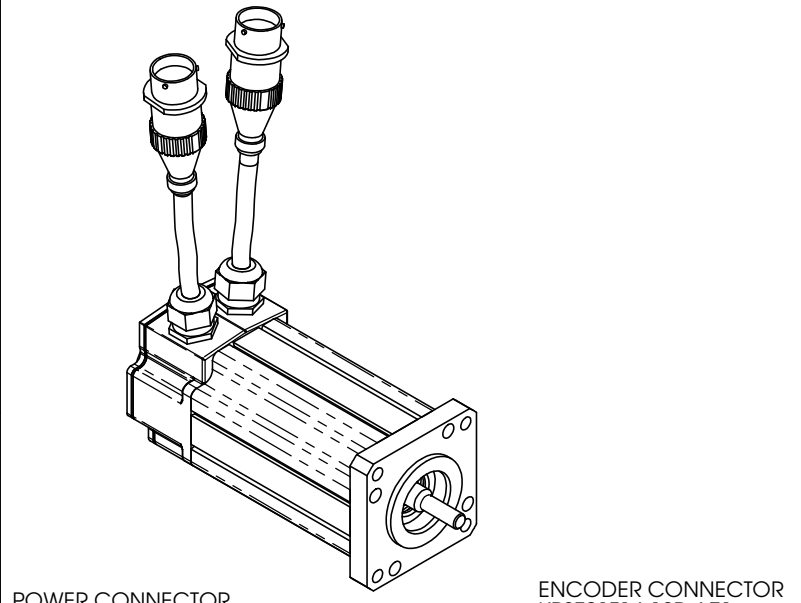
ENCODER CONN WIRING CODE	
FROM	TO PIN
OUTPUT A	A
OUTPUT A'	B
OUTPUT B	C
OUTPUT B'	D
OUTPUT Z	E
OUTPUT Z'	F
CASE GROUND	G
N/C	H
+ 5 VDC	J
+ 5 VDC	K
COMMON	L
COMMON	M
N/C	N
N/C	P
THERM	R
THERM	S
OUTPUT W (H1)	T
OUTPUT U (H3)	U
OUTPUT V (H2)	V

MOTOR CONN. WIRING CODE	
FROM	TO PIN
MOTOR M1	A
MOTOR M2	B
MOTOR M3	C
CASE	D
N/C	E

NOTE:  
TEMPERATURE SENSOR:  
CONTACTS: NORMALLY CLOSED  
MAX AMPS: 6 AMP  
RATED VOLTAGE: 24VDC



**B** USE MOTOR CONFIGURATION FILE FROM CMC PER MOTOR MODEL NUMBER



NOTES:  
1. ROTATION: CLOCKWISE MOTOR ROTATION VIEWING DRIVE END OCCURS WHEN PHASE A LEADS PHASE B, PHASE B LEADS PHASE C.

**B** FRAME: T0601 WITH NEMA 23 FLANGE

DIMENSIONS IN BRACKETS (DUAL) ARE IN MILLIMETERS

<b>NOTICE</b> Information contained herein is the sole property of Cleveland Motion Controls, Torque Systems Division. This may not be reproduced, copied or traced in any manner in part or whole without the written permission by Cleveland Motion Controls, Torque Systems Division.	MILLIMETERS (mm) TOLERANCES UNLESS OTHERWISE SPECIFIED X +/- 0.25 XX +/- 0.25 XXX +/- 0.100	APPLICATION NEXT ASBY USED ON 60mm	<b>Cleveland Motion Controls</b> An Ingersoll Rand Company Torque Systems Division
	THIRD ANGLE PROJECTION 	ANGLES +/- 0-30 MATERIAL N/A FINISH N/A	

CAD GENERATED DRAWING. DO NOT MANUALLY UPDATE.